

Entwicklung eines Simulationsprogramms zur Berechnung der Grundwasserbeeinflussung von Erdsonden-Wärmespeichern

Dan Bauer

Institut für Thermodynamik und Wärmetechnik (ITW)

Professor Dr.-Dr.-Ing. habil. H. Müller-Steinhagen

Universität Stuttgart

Pfaffenwaldring 6, D-70550 Stuttgart

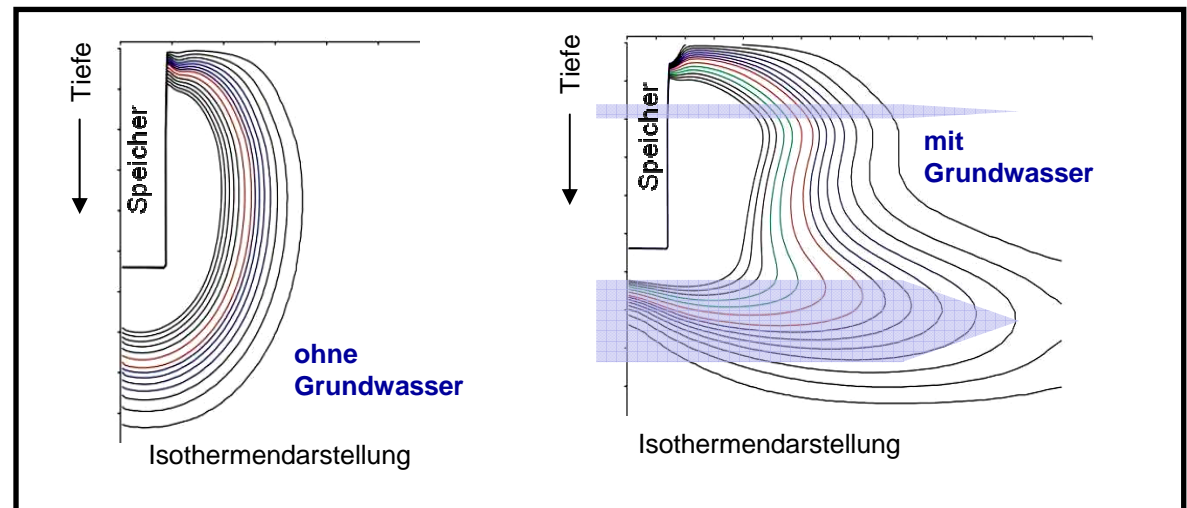
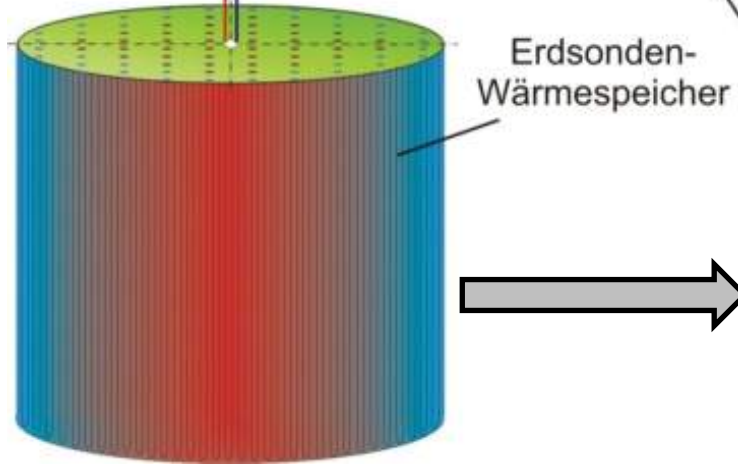
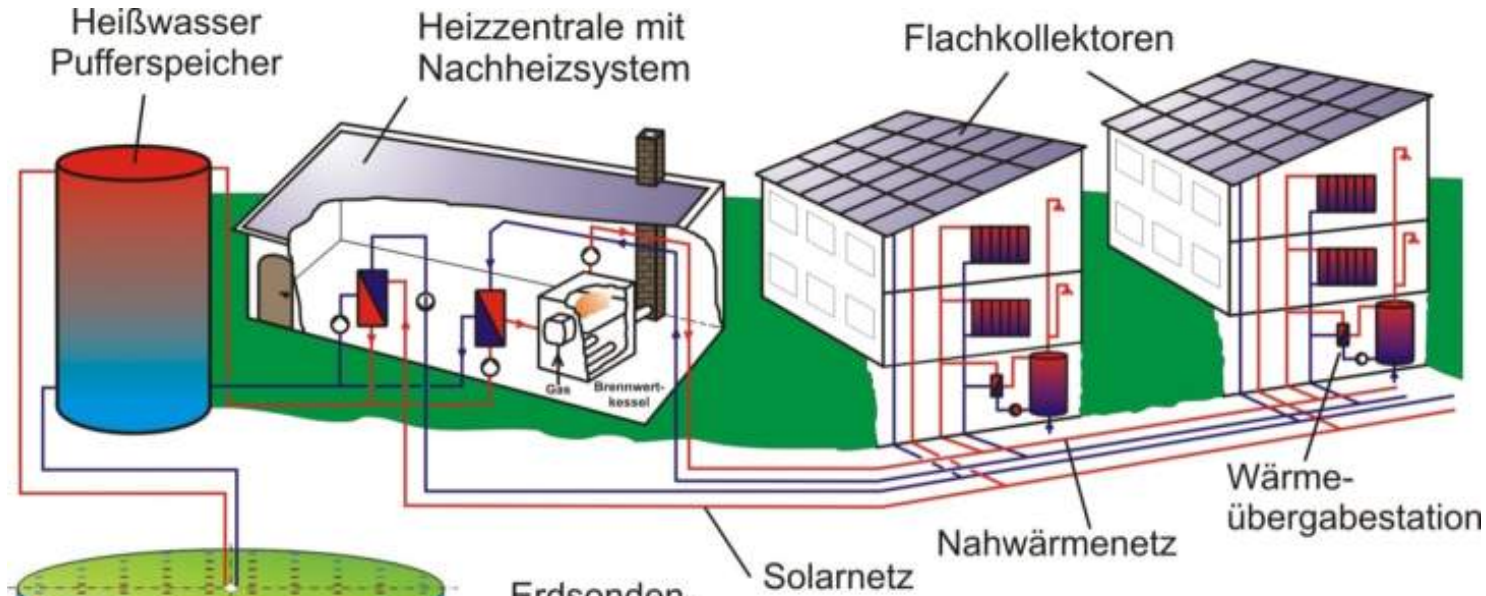
Tel.: 0711-685-69445, Fax: 0711-685-63503

Email: bauer@itw.uni-stuttgart.de,

Internet: www.itw.uni-stuttgart.de

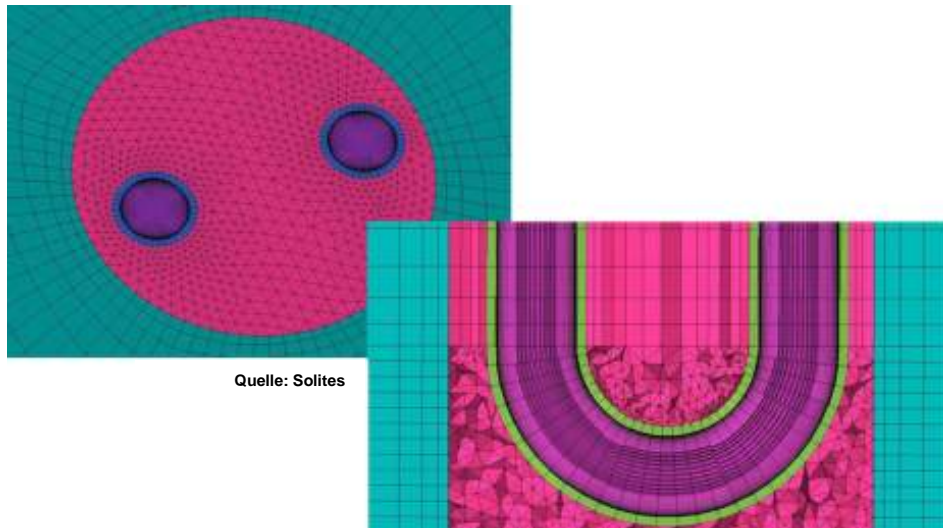
Einführung – Motivation

www.itw.uni-stuttgart.de

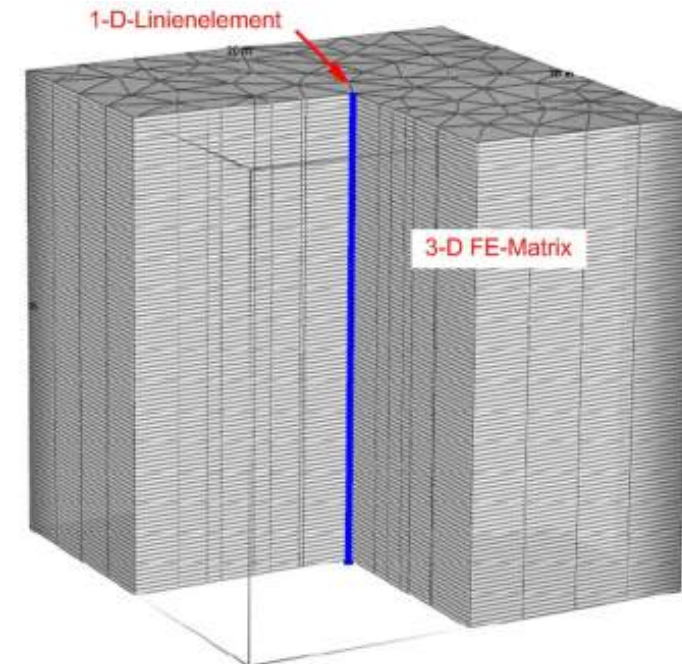


Simulationsprogramm

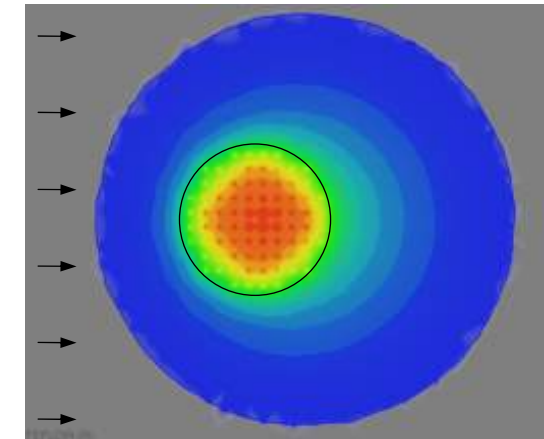
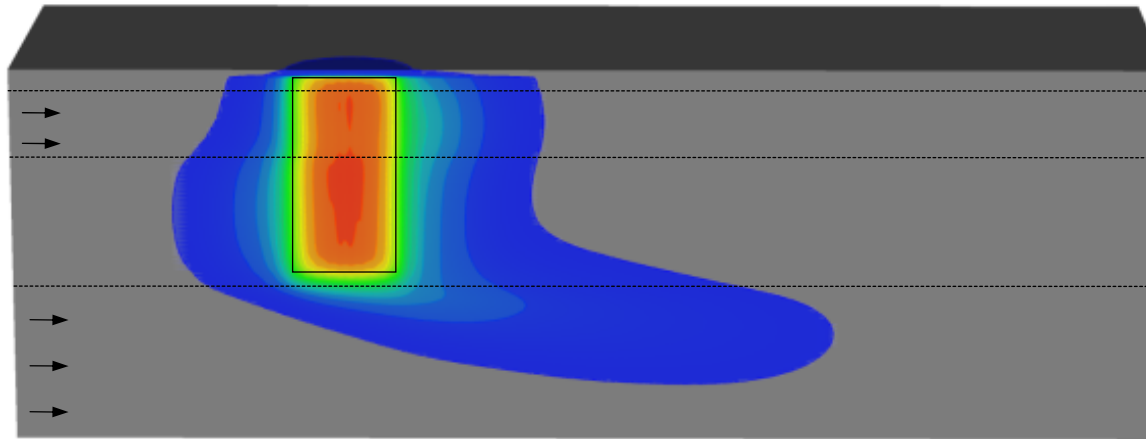
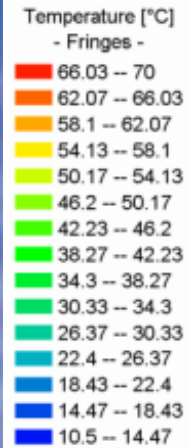
- Implementierung der Wärmeübertragungsmechanismen von Erdwärmesonden innerhalb von 1-D-Linienelementen in geeignete Finite Elemente Matrix (FEFLOW)



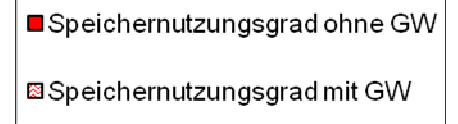
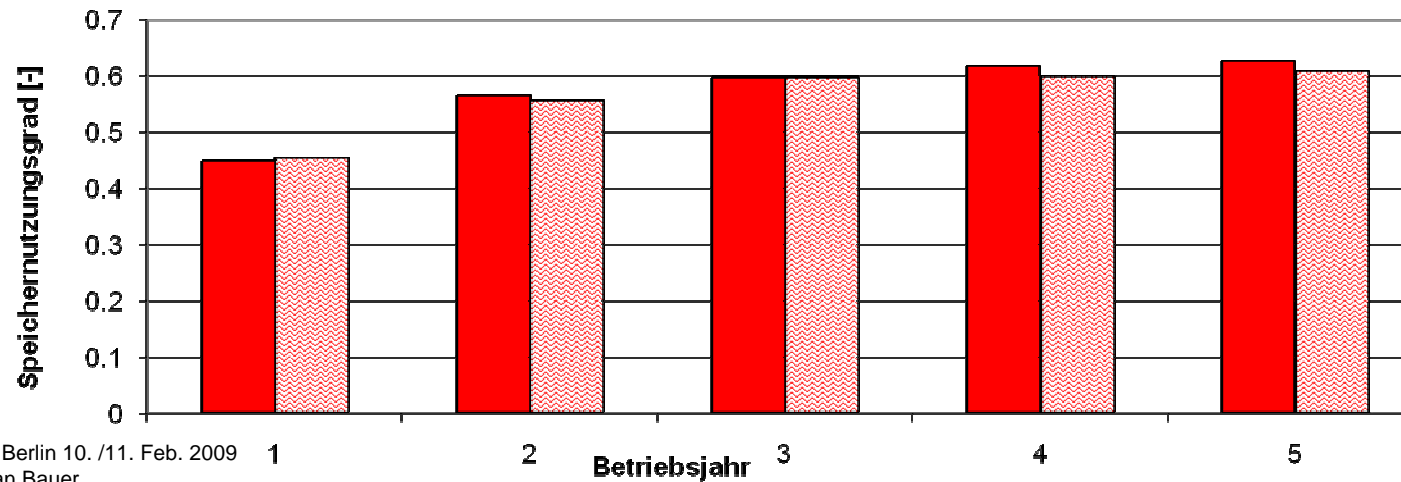
Quelle: Solites



3D-Temperaturprofil



Energetische Auslegung



GW...Grundwasser